



## Instructions

# Quick Start Tutorial for TRILUTION® LH Software Version 3.0

### Part Number ETR210630R30

Let Gilson's Quick Start Tutorial assist you with learning and using TRILUTION LH Software. The enclosed CD is a self-contained beginner's tutorial, demonstrating how to create methods in TRILUTION LH Software and run samples for a simple Solid Phase Extraction application using the Gilson GX-271 ASPEC™.

The CD will automatically load a Quick Start Tutorial main menu with several TRILUTION LH Software tutorials and access to two additional resources to assist you in getting started. The tutorials can be viewed in any order by clicking the Play button from the main menu. Basic users may want to start with the 'Running Samples' tutorials, while users responsible for Method building may want to start at the beginning to learn from each tutorial. Each tutorial loads in a separate window through your web browser using Adobe Flash (see specifications on last page). Maximize the screen by pressing F11 on your computer keyboard (or View/Full Screen from your browser) to play the tutorials in full screen mode.





The following topics are highlighted and discussed on the tutorial CD.

<b>Tutorial Name</b>	<b>Topics Highlighted/Discussed</b>
<b>Using the Quick Start Tutorial CD</b>	Instructions on how to use the tutorial CD effectively
<b>TRILUTION® Navigation</b>	Overview of all menus and functions
<b>Creating a Method</b> <b>Configuration</b> <b>Bed Layout</b> <b>Method</b> <b>Error Handling</b>	Building a New Method Establishing a Configuration Building a Bed Layout Using Tasks to Create a New Method Adding Error Handling Conditions
<b>Running Samples</b>	Building a New Sample List Enter Variables Simulate Add and Copy Lines Establishing a Run Name
<b>Reports &amp; Log Files</b>	Opening Results Viewing and Searching Log Files Viewing Reports

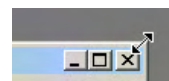
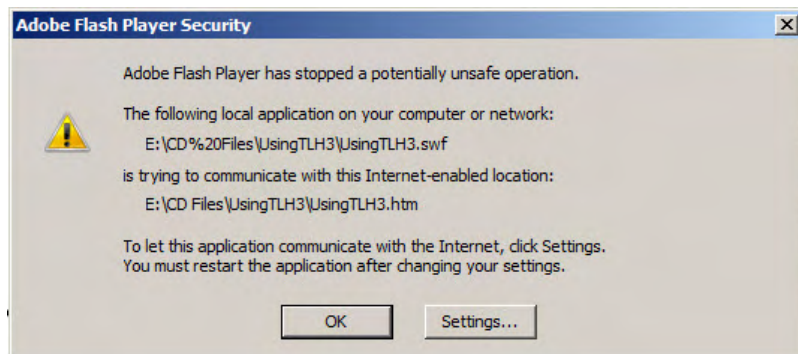
Two additional resources are accessible from the main menu:

1. TRILUTION LH v3.0 Technical Notes Handbook
  - Electronic book highlighting variables, operators, and the scheduler function.
2. Instrument TechTips Website
  - Complimentary website from Gilson highlighting PODCASTS and QUICKCLIPS on specific topics in TRILUTION software.



## Instructions for Getting Started

- 1 Disable pop-ups from your browser (Tools/Pop-up Blocker). Select Turn Off Pop-up Blocker.
- 2 Insert the CD. The tutorial will automatically start and will display the main menu page. (If your computer does not automatically start the CD, please run the .EXE file on the CD.)
- 3 Click on a topic to view a tutorial.
- 4 If you see a security message from Adobe Flash Player, click **OK**. This is a message only, and it is not required to have internet connection to view the tutorials.
- 5 Press F11 to view tutorials in full screen with the resolution mentioned below for the tutorial to fit the window. Adjust your screen as necessary using the corners to reduce or enlarge.



## Computer Requirements

	Specification	Reason
<b>Processor/Speed, RAM and Hard Drive</b>	Per specifications listed for TRILUTION® LH Software	NA
<b>Flash-Enabled Browser</b>	Adobe Flash Player 11 or higher is recommended to launch CD files correctly from either browser	Viewing tutorials
<b>CD-ROM Drive</b>	Yes	Accessing contents
<b>Sound Card &amp; Speakers</b>	Optional	Hearing sound
<b>E-Mail Capability</b>	Optional	E-mail support
<b>Screen Resolution</b>	1440 x 900 (Press F11 for full screen in browser)	Viewing full size
<b>Acrobat Reader</b>	Version 9 or higher	Viewing .pdf files

Questions regarding operation of the tutorial can be sent directly to the Gilson Knowledge Center at [training@gilson.com](mailto:training@gilson.com).

The Quick Start Tutorial is provided with TRILUTION® LH Software. Additional copies of the tutorial CD-ROM can be ordered under part number: ETR210630R30. Additional training on TRILUTION LH Software is available. To inquire about available training on TRILUTION LH Software topics, please contact the Gilson Knowledge Center at [training@gilson.com](mailto:training@gilson.com) or by calling 800-445-7661 (U.S.) or 608-836-1551 (International).